

The School Shop is your outdoor clothing and equipment specialist and are proud suppliers of;



Source: googleimages.com

# *THE SCHOOL SHOP TIHOI CATALOGUE*



St Paul's  
COLLEGIATE SCHOOL



The School Shop  
trading as Great Oaks Trading Company Ltd  
Online shop: [www.stpauls.school.nz/shop](http://www.stpauls.school.nz/shop)





# THE SCHOOL SHOP

The School Shop is an attractive air-conditioned shop located in the foyer of the Student Centre at St Paul's Collegiate School. All outdoor products stocked in the School Shop come highly recommended by Tihoi staff. Products have been tested and approved by the Tihoi directors to ensure they are durable and practical enough to withstand the rigorous Tihoi conditions. Shop staff have a comprehensive understanding of the Tihoi products and are more than happy to answer any of your queries.

The shop endeavours to hold stock for both intakes during the year and wherever possible, will honour prices stated within this catalogue. However some price increases may apply. The shop accepts Farmlands card for single purchases over \$100.00 and where possible supports NZ manufacturers. **Top brands** such as **RAB, Evolve, Marmot, Ridgeline, Tatonka, Lowe Alpine, and Hunters Element**, are available to purchase in the School Shop. If there is a Ridgeline or Hunters Element product you would like us to order in that is not in this catalogue, please contact one of our friendly staff and they will be happy to order this in for you. We welcome feedback from parents and students, which helps us to make any improvements to assist you with your shopping experience.



## School Shop term trading hours

Monday to Friday: 7.45 am – 4.00 pm

**Tihoi induction November 9 2020** (time and venue to be advised). The shop will be open 8am - 7pm approx

## School holiday trading hours

The **last Thursday** and **Friday** of the School Holidays **9am - 3pm**

Closed **EXEAT weekends**.

Trading hours are listed on the website, which is updated as and when required.

Online shop. [www.stpauls.school.nz/shop](http://www.stpauls.school.nz/shop)

## Contact details

Shop Tel: 07 9578841 Manager DDI 07 9578882

Email: [greatoaks@stpauls.school.nz](mailto:greatoaks@stpauls.school.nz)



## TIHOI SATURDAY OPENINGS 2021

### DATES FOR EXTENDED TRADING HOURS.

#### Intake two 2021

**Saturday 13 March 2021** 12.00 pm - 4.00 pm (Open Day)

**Saturday 15 May 2021** 8.00 am - 3.00 pm

**Sunday 13 June 2021** 8.00 am - 3.00 pm

**Saturday 3 July 2021** 8.00 am - 12.00 pm

#### Dates for intake one 2022

**Saturday 30 October 2021** 8.00 am - 3.00 pm

**Saturday 13 November 2021** 8.00 am - 3.00 pm

**Saturday 27 November 2021** 8.00 am - 3.00 pm

**The shop will be open for appointments only in the weekend. Please phone the shop for an appointment. If the dates above do not work for you, we will be happy to arrange a more suitable time after school for your Tihoi purchases.**

**Tihoi induction evenings the shop will be open 8.00 am - 7.00 pm approx after the induction**

**Please check on line for any changes or updates at: [www.stpauls.school.nz/shop](http://www.stpauls.school.nz/shop) (search dates).**

## METHODS OF PAYMENT IN THE SCHOOL SHOP

You can either charge items to your child's school account, or the shop accepts Debit card, Visa, Mastercard, Cash or Farmlands card.

## Note:

Parents, caregivers, extended family and friends are all very welcome to purchase from the School Shop for their own purpose whether it is for wearing around the home, purchasing as a gift, on the farm, in the bush or just to look trendy.





## CUSTOMER TESTIMONIALS

Thank you to you and your team for making the process of advising, fitting and buying of the Tihoi gear so easy for us. You have everything on site with multiple options available and a great size range, all at competitive pricing. Your staff were very helpful and knew their product and the suitability for our son. This certainly made the gear preparation hassle free for me! The added bonus of free sock pack naming was awesome! I had peace of mind knowing that what my son was taking was going to meet all the needs of the outdoor programme.

**Helen Derry**

We have had two boys go to Tihoi and have purchased all their clothing and equipment through the St Paul's School Shop. The shop has a great range, often providing a choice of different brands for each product, all of which have been tried & tested at Tihoi. This is reassuring to know your son has the best quality gear for the tough conditions. Sandy and her team are amazing. Not only do they have a wealth of knowledge on all the Tihoi gear, the shop provides a fantastic friendly and helpful service. They take the time to make sure your son gets the right gear choice for his individual needs.

**Anna Grigg**

Being able to make an appointment at the School Shop and having one-on-one assistance when shopping for Tihoi gear was great. It is quite a list, so the experience and product knowledge of the staff along with the tried and tested clothing & equipment in stock left me feeling confident that Olly would head off well equipped and warm!

**Jenny Barris**

Thank you so much for your time and compassion while we were shopping Tihoi products for Cameron and Josh. At a very stressful time, your patience and helpfulness was much appreciated.

**Anita and Paul Stokes.**



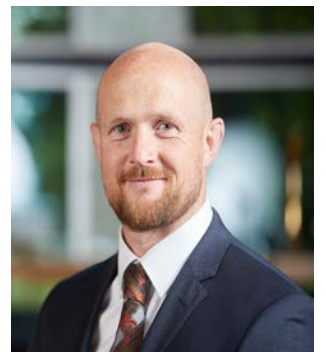




Dear Parents/caregivers

We have put this information and priced catalogue together with the School Shop for your convenience. The school has had the benefit of more than 30 years experience operating Tihoi Venture School and the accumulative knowledge from successive directors means they know which products work best in the unique Tihoi environment.

In addition, working in the outdoor education sector gives us direct contact with the most up-to-date products, experience and knowledge of their suitability and durability for our Tihoi students. Clothing and equipment needs to be of a good quality to stand the rigours of the Tihoi programme and we have worked with St Paul's School Shop sharing our knowledge and experience, to offer you a range of products and advice that we know will meet your son's needs for the time he is at Tihoi.



All of the products in the School Shop have been tested and approved by either myself or my instructors and are highly recommended by us. In the past some parents have purchased products elsewhere that have proven to be unsuitable for Tihoi conditions and consequently parents have had to make a second purchase. We want to prevent this situation whenever possible.

Please do not hesitate to speak to the staff at Tihoi or the School Shop, if you have any questions. We all want to share our collective wisdom in assisting you and your son at this time in his education.

PETE EVANS TIHOI DIRECTOR









## Raincoat/over trousers

### Specially designed for extreme Tihoi conditions.

(white stitching is only to show detail of pockets)



**Very popular  
Tihoi approved**



#### 1 **WATERPROOF HI VIZ RAINCOAT** TOP QUALITY GARMENT APPROVED BY TIHOI FOR DURABILITY AND PERFORMANCE.

Three Layer bonded construction, outer layer is 125gm Nylon/ripstop/bonded with a PU membrane/then internally bonded with a tricot protection gauze, seam welded. Total finish weight 230gm.

**Waterproof rating over 35,000k .**

**Breathability 10,000k .**

Includes:Tihoi stag logo.

Colours: Black with orange, black with blue

Sizes: 10,12, XS - XL

**PRICE: \$299.00**

**(Also ideal for around the farm to keep dry, protected and a reminder of parent tramp).**



#### 2 **WATERPROOF HI VIZ OVER TROUSERS** TOP QUALITY GARMENT APPROVED BY TIHOI AS THEY ARE EXTREMELY DURABLE

Three Layer bonded construction, outer layer is 125gm Nylon/ripstop/bonded with a PU membrane/then internally bonded with a tricot protection gauze, seam welded. Tihoi stag logo on front. Total finish weight 230gm.

**Waterproof rating over 35,000.**

**Breathability rating 10,000K.**

Tihoi stag logo only, no text

Colours: Black with orange, black with blue

Size: 10, 12, XS - XL

**PRICE: \$199.90**

**(Also ideal for around the farm to keep you dry, protected and a reminder of parent tramp).**







## 1 WEFT THERMERINO TOPS AND LONG JOHNS

100 percent Merino wool. Thermerino is a New Zealand made product that keeps you dry. It is highly breathable and wicks moisture rapidly away from the body. The garments are machine washable.

**Long Johns Long sleeve tops**

Size for both: XS-3XL

**OUR PRICE: \$69.00 EA**



## 2 BED SOCKS (BELOW) (MCLEAN-CRAWFORD)

NZ made 100% merino wool. Superior warmth for snug and toastie toes. Very popular with Tihoi students. 100 % pure comfort.

**PRICE: \$19.90 PR**

**Ladies, also ideal in boots to keep your feet warm.**



## Fibre comparison

### SYNTHETIC FIBRE

Functional, quick drying and abrasion resistant. Soft fibres are kind to the skin and ensure high wearing comfort. Keeps the body warm.

### MERINO FIBRE

Warm and odourless even after wearing for a long time. Merino provides soft feel with its fibre structure and excellent temperature regulation. Takes longer to dry. Soft fibres are kind to the skin and ensure high wearing comfort. Keeps the body warm



## 3 HELI 100% UNISEX POLYESTER PUFFER JACKET

100% polyester outer and inner. Fill: 100% polyester fibre. Ultra light micro fabric and incredibly warm due to the micro fibre padding and technical construction. Includes detachable hood, full zip closure, side zip pockets, elastic bound cuffs, internal and insulated lining which traps air for serious warmth. Code JK26.

Size: XXS-5XL

Colour: Black/black, black/green, black/blue

**PRICE: \$99.00**

new







Choosing the correct sleeping bag can be a daunting task and below our Rab supplier, who has over 30 year experience with supplying sleeping bags, has provided the information below to help you make an informed decision. It is very important to the shop staff that your son is suited to the right sleeping bag and that the confusion over the EN testing is clarified. The Rab sleeping bag is our most popular seller and we have always received positive feedback on the way it has performed. Tihoi staff also recommend this bag for Tihoi conditions.

**NO DOWN SLEEPING BAGS AT TIHOI PLEASE.**

### CHOOSING THE RIGHT SLEEPING BAG

It is important to understand that a sleeping bag **does not warm you up** – its job is to retain the heat that your body generates, preventing you from getting cold. In fact, a sleeping bag should be considered an essential piece of life preserving equipment. Ratings describe how well a sleeping bag retains heat when the air exterior to the bag is at a certain temperature.

Because all of our bodies are different, what one person needs for a good night's sleep is not necessarily the same as the next. This means that it is difficult to quantify exactly how warm a sleeping bag is and as such, any rating should be treated as a guide. At Rab, we use the European **EN23537:2016** standard, to rate the majority of our sleeping bags.

**EN23537:2016** is an up to date European standard designed to regulate the temperature ratings of sleeping bags across the industry. The test assumes that a 'standard man' is 25 years old, 1.73 m tall and 73 kg, while a 'standard woman' is 25 years old, 1.60 m tall and 60 kg. The **EN23537** rating is determined by using a thermal mannequin to accurately record a series of measurements from the 'Upper limit', the temperature at which a person can sleep without perspiring, all the way down to the 'Extreme limit', which determines the minimum temperature at which a person can survive. Males tend to sleep warmer so it is safe to say the ratings can be understated.

#### Lower Limit Rating

The 'Lower limit' measurement is the temperature at which the test's 'standard male' can remain asleep for eight hours without waking due to heat loss.

#### Extreme rating

The extreme rating expresses the absolute limit of a sleeping bag. It should be used to guide how a bag would perform in an emergency situation rather than a recommended use case. It refers to the temperature at which a 'standard female' can remain for six hours without risk of death from hypothermia.

#### Note:

So many variables can come into it as well, health, fitness, are they using a mat underneath, diet, humidity, altitude, shape of the bag, are they using a liner, etc so the ratings should only be used as a guide.

Without testing, a bag manufacturer or supplier can say what they want until someone is called to account. Without the **EN23537:2016**, they can only use a guestimate!

### SHAPE & FIT

Regardless of fill power or fill weight, if a sleeping bag is too big, you will lose heat.

**MUMMY** - Mummy shaped bags are broad at the top to accommodate your shoulders and narrow slightly towards the feet to prevent gaps and drafts.

**Information supplied by Neil Stitchbury - Rab supplier, NZ**

### RAB SOLAR 3 SPECIFICATIONS

The Solar 3 is a light-weight, packable synthetic insulated sleeping bag, with a ripstop Nylon outer fabric, designed for light-weight, year-round use. • Weight: 1250g (Standard) 1300g (Extra long)

• **EN23537:2016** Lower Limit Rating: -6°C

• **EN23537:2016** Extreme Rating: -23°C

• Max user height: 185cm/72.8 inches (Standard) | 200cm/78.8 inches (Extra Long)

• Shoulder width: 70cm/27.5 inches (Standard) | 72cm/28.3 inches (Extra Long)

• Hip width: 52cm/20.5 inches (Standard) | 54cm/21.3 inches (Extra Long)

• Foot width: 41cm/16 inches (Standard) | 42cm/16.5 inches (Extra Long)

• Light-weight 20D ripstop polyester outer

• Soft touch breathable polyester lining

• Fill: Synthetic/status polyester

• Shingled upper construction

• Blanket base construction

• Mummy taper shape

• ¾ length YKK 5 coil main zip with full length baffle and noctilucant pullers

• Left and right hand zips available - can be zipped to other ignitions

• Anti-snap bonded zip guard

• Internal collar and hood drawcord, internal stash pocket

• Angled footbox, internal

### RAB Solar 4 SPECIFICATIONS

Superior warmth to the Solar 3 above  
Weight: 1500g (Standard) | 1695g (Extra Long)

• **EN23537:2016** Lower Limit: Rating -9°C

• **EN23537:2016** Extreme Rating: -28°C

**Note: All other features same as Rab Solar 3**

• Both sleeping bags above have been temperature tested to the new European standard EN23537: 2016

**Solar 4 is warmer than Solar 3 and highly practical for four seasons sleep system.**

RAB Solar sleeping bags are an improvement on the ever popular and warm ignition sleeping bag. Synthetic fill materials keep getting better hence sleeping bags are getting warmer fill.





### 1 THERMAL ROLL MAT (BELOW)

10mm foil back 200 x 50, 1cm thick.  
Colour: Depends on availability, normally blue.

**PRICE \$24.90**



## SUPERIOR SYNTHETIC SLEEPING BAGS

### 2 SYNTHETIC RAB SOLAR 3 SLEEPING BAG (NEW) (LEFT)

A resilient sleep system that excels in changeable conditions, The material is tough and durable with its 20D ripstop outer and lining, while remaining relatively light and packable. The Solar range has a lightweight and breathable recycled polyester sheet insulation which has excellent temperature regulation and quick drying properties, making it ideal for all night comfort in damp or unreliable conditions. The solar 3 also features a differential cut with blanket base and shingled upper construction to optimise thermal efficiency, plus a snug internal draft collar to keep the cold at bay. The Solar 3 sleeping bag strikes a great balance between size, comfort and multi application flexibility. Temperature tested to new European standards. Temperature limit rating - 6°C Extreme - 23 °C Superior quality.

**EN tested 23537:2016 Please refer to specs on page 7**

Colour: Celestial Blue (colour may vary) (very compact sleeping bag) Ideal for year round use. Available in standard and XL

**HIGHLY RECOMMENDED BY TIHOI DIRECTORS**

**RRP: \$329.00 OUR PRICE: STANDARD \$299.00 XL \$309.00**



### 3 SYNTHETIC RAB SOLAR 4 SLEEPING BAG (NEW) (LEFT).

Superior warmth to the Solar 3, ideal for boys who really feel the cold. Temperature tested to new European standards.

**EN tested: 23537:2016.** Superior quality, very compact.

Colour: Atomic orange (colours may vary from time to time)

Temperature ratings: Limit rating -10°C, extreme rating -28°C warmth. Bag weight 1.635kg. Ideal for year round use. **Please refer to specs on page 7** (very compact sleeping bag) Mummy shape.

**HIGHLY RECOMMENDED BY TIHOI DIRECTORS**

**RRP: \$459.00 OUR PRICE: STANDARD \$339.00 XL \$349.00**



### 4 MARMOT SLEEPING BAG TRESTLE 15

A reliable, all-purpose synthetic bag comfort rating - 5°C lower limit rating -11.2°C, extreme rating - 30°C Insulates in sustained cold and damp conditions. Has improved liner fabric and style lines for increased comfort.

**EN tested 13537.** Bag weight 1765g

**OUR PRICE: STANDARD \$199.00**



#### No down sleeping bags please,

Unfortunately, down has a weakness: moisture will cause it to lose its loft and all of its insulating properties leaving you feeling cold and wet. Drying down takes a lot of time and effort and when done incorrectly it can become damaged.

#### Helpful Hint:

To maintain performance of your sleeping bag use Nikwax Tech Wax and Nikwax TX Direct spray on.







## 2 RIDGELINE IGLOO TOP (Right)

Made of 340gm Southern Star pro with membrane. This go anywhere, do almost anything jacket, includes a long tail for back protection, zippered pockets, windproof properties, breathable, large frontal zip, studed chest pockets, adjustable velcro cuffs .  
Size S - XL (larger sizes on request).  
**RRP \$109.00 OUR PRICE: \$99.00**

## 3 RIDGELINE FLEECE STAY DRY PANT

Made with a soft, dense construction, provides optimum comfort (so cosy), plus the durability to last year after year. With the addition of innovative dry seat liner you can safely sit anywhere and never get a wet butt.  
Size : XS - 5XL  
Colour: Buffalo camo, black, olive.  
**RRP \$79.00 OUR PRICE \$69.00**



## 1 HUNTERS ELEMENT ECLIPSE TEE (LEFT)

100% durable polyester lightweight, moisture wicking  
made from bamboo charcoal infused honeycomb fabric wicks moisture and dries rapidly. When exposed to the breeze it has an instant cooling effect that provides relief on summer days. This tee also is infused with antimicrobial and is a natural odour filter. It utilizes two performance fabrics. Weight 145gm Body mapped design. Light weight UPF 30+.  
Size: S - 3XL  
Colour: Black, Green  
**NORMAL RRP \$44.99 OUR PRICE \$39.00**



## 4 ESSENTIALS APPAREL T-SHIRTS (ABOVE)

100% polyester 140gm. Made of micro poly square weave. UV protection. The Zenith T shirt is a classic fit, with reflective badge on straight hem.  
Size: From XS-5XL  
Colours: Black/ charcoal, black/green, black/royal blue, navy/sky, navy/red. Other colours available on request.  
**PRICE: \$29.90**

## 5 RIDGELINE Snowline Five piece Black/olive pack (right)

**Pack consists of:**

200gsm Southern Star Fleece  
1 x long sleeve fleece top  
1 x pair of black staydry pants,  
1 x olive workman's tee,  
1 x olive fleece beanie  
1 x pair of snug fit socks  
Size XS - 2XL

(larger sizes available on request)  
**RRP \$149.00 OUR PRICE: \$129.00**





# HYDRAFUSE™ HEAT+™



## 1 TAPUA BUSHCOAT

### (ABOVE) (NEW) SHORT SLEEVE

Three layer short sleeve lightweight water resistant outer and high loft fleece lining makes an extremely versatile and warm hunting jacket. Wind and light showers will never bother you again. Fixed hood, chest pocket. Sizes S - 4XL. Also available in kids sizes.

Colour: Veil **PRICE: \$149.00**

Frost green. **PRICE: \$139.00**

Black: **PRICE: \$139.00**



## 4 POLAR FLEECE SHORTS

Our popular 450 gm polar fleece. Size XS-2XL

NZ Made. Very warm

Colour: Black or camo

**PRICE: \$49.90**

## 5 THE BUSHMAN (RIGHT)

### 1/2 ZIP JACKET (NEW)

#### LONG SLEEVE

This very durable water resistant anorak will keep you warm in the harshest southerly gale. It has an extra long tail so you can sit on the back of the coat and keep dry. Three layer laminated fleece with water resistant and breathable membrane. Fixed hood with tunnelTECH adjustment. Complete with a half front zip, chest pockets, velcro cuff adjusters. Reflective stag image on hood. New handwarmer pockets. Sizes S - 2XL.

Larger sizes available on request

Colour: Bushman Frost green/orange trim.

**RRP: \$159.00 OUR PRICE \$139.00**

**New design coming soon**



## 2 RIDGELINE BALLISTIC HOODIE

Ridgeline's Southern Star 280gm fleece is perfect as an over shirt on those cooler days. Half zip top with kangaroo hand warmer pocket, pockets, plus a pocket with zip closure and includes a fully lined hood. has the look as well as performance..

Size: XS - 3XL

Colour: Buffalo camo, black.

**NORMAL RRP \$49.99 OUR PRICE \$45.00**



## 3 RETRO HOODIE (ABOVE)

Extremely warm 485 gm fleece hoodie.

One of the warmest you will ever own.

Custom metal zip, water-resistant, windbreak hood and shoulders.

Size S - XL

Colour: Frost green. navy and black

**RRP \$109.99 Our price: \$99.00**



## 6 FRONTIER BUSH COAT (ABOVE)

### 1/2 ZIP JACKET (NEW)

#### LONG SLEEVE

This very durable water resistant anorak will keep you warm in the harshest southerly gale. It has an extra long tail so you can sit on the back of the coat and keep dry. Three layer laminated fleece with water resistant and breathable membrane. Fixed hood with tunnelTECH adjustment. Complete with a half front zip, two lower zippered pockets, velcro cuff adjusters and domed chest pocket. Elasticated waist adjustment. Net weight 1000g M. Sizes S - 2XL.

Larger sizes available on request

Colour: Black

**RRP: \$159.00 OUR PRICE \$139.00**

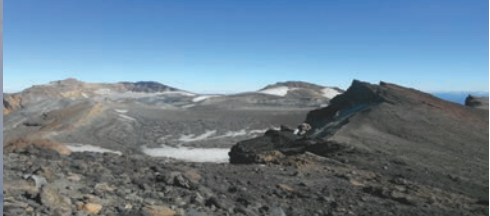




Source: googleimages.com



Source: googleimages.com



Source: googleimages.com



Source: googleimages.com



Source: googleimages.com





## CENTRE LIFE

### CASUAL CLOTHES FOR SCHOOL AND AROUND THE CENTRE

- | H                        | P                        |   |
|--------------------------|--------------------------|---|
| <input type="checkbox"/> | <input type="checkbox"/> | 2 pairs pyjamas ( <b>students must wear pyjamas</b> ) |
| <input type="checkbox"/> | <input type="checkbox"/> | 5 t-shirts (any style must be quick dry fabric)       |
| <input type="checkbox"/> | <input type="checkbox"/> | 2 long sleeved tops                                   |
| <input type="checkbox"/> | <input type="checkbox"/> | 2 pairs long pants (jeans, trousers or track suit)    |
| <input type="checkbox"/> | <input type="checkbox"/> | 2 pairs casual shorts                                 |
| <input type="checkbox"/> | <input type="checkbox"/> | 1 pair polar fleece shorts                            |
| <input type="checkbox"/> | <input type="checkbox"/> | 10 pairs underpants                                   |
| <input type="checkbox"/> | <input type="checkbox"/> | 1 duvet & cover                                       |
| <input type="checkbox"/> | <input type="checkbox"/> | 1 pillow  |
| <input type="checkbox"/> | <input type="checkbox"/> | 4 towels  |
| <input type="checkbox"/> | <input type="checkbox"/> | 10 coat hangers                                       |
| <input type="checkbox"/> | <input type="checkbox"/> | 1 pair swimming shorts                                |
| <input type="checkbox"/> | <input type="checkbox"/> | Toiletries (including two face cloths )               |

**Tick Boxes key**  
**P- Need to Purchase**  
**H-Have already**

### FOOTWEAR

- | H                        | P                        |  |
|--------------------------|--------------------------|--|
| <input type="checkbox"/> | <input type="checkbox"/> | 1 pair rubber jandals/sandals/slip ons/crocs |
| <input type="checkbox"/> | <input type="checkbox"/> | 1 pair gumboots                              |
| <input type="checkbox"/> | <input type="checkbox"/> | 1 pair slippers or ugg boots                 |

### OUTDOORS

#### USED WEEKLY FOR THE OUTDOOR PROGRAMME

- | H                        | P                        |  |
|--------------------------|--------------------------|--|
| <input type="checkbox"/> | <input type="checkbox"/> | 3 polypropylene or merino long sleeved tops  |
| <input type="checkbox"/> | <input type="checkbox"/> | 3 pairs polypropylene or merino long johns   |
| <input type="checkbox"/> | <input type="checkbox"/> | 1 polypropylene skull cap  |
| <input type="checkbox"/> | <input type="checkbox"/> | 1 1/2 or full zip heavy polar fleece jacket  |
| <input type="checkbox"/> | <input type="checkbox"/> | 2 polar fleece light weight jerseys  |
| <input type="checkbox"/> | <input type="checkbox"/> | 2 pairs polar fleece pants   |
| <input type="checkbox"/> | <input type="checkbox"/> | 8 pairs woollen socks (attach with loops)  |
| <input type="checkbox"/> | <input type="checkbox"/> | 1 raincoat (good quality waterproof above 20,000mm rating and breathable)  |
| <input type="checkbox"/> | <input type="checkbox"/> | 1 pair heavy duty over trousers (waterproof above 20,000mm rating and breathable)  |
| <input type="checkbox"/> | <input type="checkbox"/> | 1 pair waterproof over mittens   |
| <input type="checkbox"/> | <input type="checkbox"/> | 2 beanies - fleece or wool   |
| <input type="checkbox"/> | <input type="checkbox"/> | 1 cap  |
| <input type="checkbox"/> | <input type="checkbox"/> | 1 pair woollen mittens/gloves  |
| <input type="checkbox"/> | <input type="checkbox"/> | 2 pairs polypropylene gloves   |
| <input type="checkbox"/> | <input type="checkbox"/> | 1 full Length 3-5 mm wetsuit   |
| <input type="checkbox"/> | <input type="checkbox"/> | 1 LED headtorch  |
| <input type="checkbox"/> | <input type="checkbox"/> | 1 synthetic sleeping bag 6 degrees lower limit minimum required ( <b>Please refer to page 7 for information about temperature ratings</b> ). |
| <input type="checkbox"/> | <input type="checkbox"/> | 1 sleeping bag liner   |
| <input type="checkbox"/> | <input type="checkbox"/> | 1 tramping pack (75L)  |
| <input type="checkbox"/> | <input type="checkbox"/> | 1 pack liner   |
| <input type="checkbox"/> | <input type="checkbox"/> | 1 sleeping mat (thermal insulation)  |
| <input type="checkbox"/> | <input type="checkbox"/> | 2 heavy duty dry bags (30L - 35L)  |
| <input type="checkbox"/> | <input type="checkbox"/> | 1 pair overalls (long sleeve)  |
| <input type="checkbox"/> | <input type="checkbox"/> | 1 mug (not glass)  |
| <input type="checkbox"/> | <input type="checkbox"/> | 1 plate & bowl (not glass)   |
| <input type="checkbox"/> | <input type="checkbox"/> | 1 set of knife, fork, spoon  |
| <input type="checkbox"/> | <input type="checkbox"/> | 2 x one litre water bottles  |
| <input type="checkbox"/> | <input type="checkbox"/> | 1 pair compression or lycra shorts   |
| <input type="checkbox"/> | <input type="checkbox"/> | Thermal rash top   |

## FOOTWEAR

- | H                        | P                        |                               |
|--------------------------|--------------------------|-------------------------------|
| <input type="checkbox"/> | <input type="checkbox"/> | 1 pair leather tramping boots |
| <input type="checkbox"/> | <input type="checkbox"/> | 1 pair gaiters                |
| <input type="checkbox"/> | <input type="checkbox"/> | 1 pair dive booties           |
| <input type="checkbox"/> | <input type="checkbox"/> | 2 pairs thermal sock liners   |



### FITNESS

- | H                        | P                        |  |
|--------------------------|--------------------------|--|
| <input type="checkbox"/> | <input type="checkbox"/> | 1 lightweight windbreaker                |
| <input type="checkbox"/> | <input type="checkbox"/> | 4 pairs running socks                    |
| <input type="checkbox"/> | <input type="checkbox"/> | 1 pair spare boot laces                  |
| <input type="checkbox"/> | <input type="checkbox"/> | 1 St Paul's Collegiate house singlet     |
| <input type="checkbox"/> | <input type="checkbox"/> | 1 pair St Paul's Collegiate rugby shorts |
| <input type="checkbox"/> | <input type="checkbox"/> | 1 pair off road running shoes            |
- (Please note most running at Tihoi is performed on bush tracks and farm paddocks therefore, a good tread is needed on running shoes).

### OTHER

- | H                        | P                        |  |
|--------------------------|--------------------------|--|
| <input type="checkbox"/> | <input type="checkbox"/> | Sno-seal or nikwax (boot protector)      |
| <input type="checkbox"/> | <input type="checkbox"/> | 10 large plastic bags (rubbish bags)     |
| <input type="checkbox"/> | <input type="checkbox"/> | 1 pair sunglasses                        |
| <input type="checkbox"/> | <input type="checkbox"/> | sunscreen                                |
| <input type="checkbox"/> | <input type="checkbox"/> | insect repellent (Deet is a good option) |

### OPTIONAL

- | H                        | P                        |  |
|--------------------------|--------------------------|--|
| <input type="checkbox"/> | <input type="checkbox"/> | USB memory stick                           |
| <input type="checkbox"/> | <input type="checkbox"/> | <b>bed socks (recommended by students)</b> |
| <input type="checkbox"/> | <input type="checkbox"/> | <b>neck warmer (Recommended)</b>           |
| <input type="checkbox"/> | <input type="checkbox"/> | alarm clock Digital or analogue            |
| <input type="checkbox"/> | <input type="checkbox"/> | camera                                     |
| <input type="checkbox"/> | <input type="checkbox"/> | extra blanket                              |
| <input type="checkbox"/> | <input type="checkbox"/> | wall posters                               |
| <input type="checkbox"/> | <input type="checkbox"/> | books                                      |
| <input type="checkbox"/> | <input type="checkbox"/> | musical Instruments                        |
| <input type="checkbox"/> | <input type="checkbox"/> | cards                                      |
| <input type="checkbox"/> | <input type="checkbox"/> | hot water bottle                           |
| <input type="checkbox"/> | <input type="checkbox"/> | lamp/lantern for bedside                   |

**Note: No telephones, spray deodorants or aerosols of any kind please.**

**Please note this list has been designed by Tihoi directors and instructors and is the minimum requirement.**







### 1 HUNTERS ELEMENT (EVOLVE) LIMA BOOTS (LEFT)

High cut, lightweight boots. Suede leather combined with a Hydrafuse waterproof lining. Double stitched. Aggressive vibram viking sole with excellent grip for all conditions. Pressed steel lace hooks. High cut provides excellent ankle support.

Sizes: 6, 7, 8, 9, 10, 11, 12, 13, 14 US

**PRICE: \$199.00**



### 2 LOWE ALPINE TREK GAITER

Lightweight, waterproof, breathable front-opening gaiter with tough 600D ankle cuff. Full zip and velcro closure

Two Sizes S-M, L-XL

**PRICE: \$69.90**



### 3 RIDGELINE APACHE HIKING BOOTS (LEFT & RIGHT)

Mid-cut style waterproof hiking boot. Hypergrip textured outer sole and provides excellent traction on both wet and dry surfaces. Hydroguard membrane. Top grain waterproof treated nubuck leather outer fabric with 200g thinsulate insulation inner fabric. Fast lacing system. Slightly wider than the Echo/Lima boot (left).

Size US 7 - US 14 Water resistant unisex

**OUR PRICE: \$239.00**



### 5 BRIDGEDALE COOLMAX SOCK LINERS (TWO PACK)

Moisture wicking for dryness. Unique fusion technologies with exceptional performance and durability. Balanced insulation and moisture wicking for dryness. Expedition heavyweight to ultra light run, blister free, day long dryness and comfort. Designed in the UK .

57 % Coolmax /polyester, 20% nylon/ polyamide, 19% endurofil / polypropylene and 4% lycra/elastane.

**OUR PRICE: \$45.00**

### 4 ALP THERMAL SOCKS (ABOVE)

For ultimate warmth and foot comfort. With a full terry interior, nylon reinforced heel and toe. Merino wool as the fibre of choice because of its naturally odour-resistant, non abrasive properties. Shrink controlled.

**Made in NZ. for NZ conditions.**

These socks have always been a winner.

Size: 6-8, 9-10, 11-12, 13-14.

**70% Merino Wool, 30% Nylon**

**PRICE: \$17.90 PR**

**Please refer to page 20 for sock pack special.**

**WASHING INSTRUCTIONS.**

Short warm machine wash on medium cycle. Line dry. Do not tumble dry.







## 2 MICROFLEECE LONG SLEEVE TOPS (ABOVE)

Finely woven polyester fibres gives you the guarantee of superior warmth and light weight. It features a neck zip for full heat retention that looks good zipped up or down. The tiny 200gsm Southern Star fleece fibres create multiple air cells that trap warmth inside and gives you an excellent protection against the most extreme outdoor conditions. Southern Star 200 TM does not retain moisture but allows it to evaporate and the fabric stays dry. Sizes available: XS -2XL  
Colours: Black, blue camo, blaze and buffalo camo  
**OUR SPECIAL PRICE: \$39.00**



## 5 NATURO RICE HUSK MUG (ABOVE)

350ml reusable cup manufactured from a 50/50 blend of natural rice husk fibre and BPA free polypropylene. Includes secure screw on lid and a heat resistant silicone band. Handwashing only recommended. **Tihoi Approved for safety and versatility.**  
**FOUR COLOURS AVAILABLE**  
**PRICE \$7.50**

## 1 ACE LAMINATED DRY BAG (RIGHT)

ACE laminated dry sack. Extra heavy duty dry bag. Size: 67 x 30cm  
Volume 30 Litres  
Weight: 410gm  
**PRICE: \$39.00 ea**



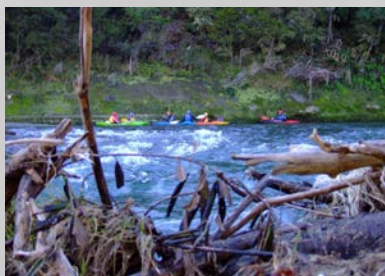
## 3 1.182 LITRE DRINK BOTTLE (RIGHT)

A quality 1 litre plus hard wearing stainless water bottle. Crafted from high quality, durable food grade material. Four times more durable, and chip resistant. The coating includes ingredients that meet a very high standard of safety for both the environment and human health. Includes KK Loop cap. **Approved by Tihoi directors.** Colours: Shale Black and Brushed stainless  
**RRP \$54.99**  
**OUR SPECIAL PRICE: \$39.90 ea**  
**Sipper top sold separate \$12.90ea**



## 6 DIGITAL ALARM CLOCK

includes Day/time/  
date, temperature, alarm.  
**PRICE \$21.00**



## 4 NYLON JAC PAC JACKET (ABOVE)

A showerproof, classic fit nylon jacket that can fold away into the front pocket.  
Colour: Assorted colour range.  
Sizes: XS -5XL  
**PRICE \$39.90**



**TIHOI APPROVED**



## 7 SNO-SEAL (ABOVE)

All season leather protection. Original beeswax waterproofing and protects boots against drying out. Dries to a solid wax on the outside of the boot, rather than soaking into the leather. This assists in protecting the leather and won't add additional weight to the boot or impair breathability. Pay attention to the seams when applying.  
**TUBE PRICE: \$17.90**  
**CAN PRICE: \$ 21.90**

## 8 NIKWAX BOOT PROTECTOR

Nubuck Suede and leather boot protector  
**PRICE \$17.50**





**See what makes Heat Holders so warm...**



## 1 HEAT HOLDERS THERMAL GLOVES

TOG (Thermal overall grade) rating is 1.8.  
Heat Weaver insulation lining; with long  
extendable cuffs. Extremely warm.  
Moisture wick properties  
**PRICE: \$22.50**



## 2 HEAT HOLDERS NECK WARMER

Heat holder yarn, heat weaver lining for extra warmth and protection. One size fits all. A versatile and effective alternative to a scarf. Sculptured to go around the neck and chin to for extra warmth and protection very popular item for parent tramp as well. Outer 100 % Acrylic Lining 100 % polyester. Moisture wick properties. A must for Tihoi for extra warmth.

Colour: Black  
**PRICE: \$19.90**



### 3 HEAT HOLDER THERMAL UNDERWEAR

53% polyester & 47% cotton. Ribbed construction, soft brushed inner and shapes to contour the body. Long johns have elasticated waist and fly opening. The soft brushed inner maximises the amount of warm air held close to the skin and cotton blend of the product provides natural softness and warmth. These thermals are extremely warm with a 0.45 TOG rating and ideal around camp, on the farm and/or motorbike.

Extremely warm.

## Colour Charcoal

Sizes S - XL

**PRICE: \$39.00.**

## WHAT IS TOG RATING?

**Thermal Overall Grade.** It is a scientific test that measures the thermal (heat retaining), capacity of fabric. The higher the TOG rating the warmer the garment.







### 1 RIDGELINE BLEANIE

Beanie, balaclava and neck warmer all in one. Lightweight, anti-pill microfleece available in camo, olive or black.

**PRICE: \$22.00**



### 3 POSSUM/MERINO GLOVES (ABOVE)

A unique blend of polypropylene, merino and possum fur with elastane. Made in NZ Colour: Black.

**PRICE: \$25.00**

### 2 RIDGELINE FLEECE SINGLETS (RIGHT)

Light 200g microfleece anti-pill keeps you cool in summer and warm in winter. Made from 200gsm Southern Star fleece fibres which do not retain moisture, but allows it to evaporate and the fabric remains dry.

Colours: Black  
**PRICE \$21.00**



### 4 RAB THERMALITE THERMAL GLOVES NEW (ABOVE)

Stretch knit glove, lightweight knitted baselayer glove designed using Thermalite yarn for year round layering use. Quick drying and stretchy. The glove features a seamless knit construction which improves comfort.

**PRICE: \$17.90 PR**



### 5 THERMAL SKULL BEANIE (ABOVE) THERMAL BUFF (BELOW)

This skull cap beanie and buff are made from the same fabric and the same properties as the thermal long sleeve and long johns (left, description below), and is worn with the buff, required by Tihoi instructors. The duo add more versatility together and separate and have replaced the thermal balaclava.

**SKULL BEANIE PRICE: \$14.50 EA**  
**BUFF PRICE: \$15.90**



### 6 EVOLVE POLAR

#### FLEECE BEANIES (ABOVE)

Light 285g microfleece anti-pill composition. ONE SIZE FITS ALL.

Colours: Quest beanie is Black  
Explore beanie roll over hem is Green  
**PRICE \$22.90**



### 7 GV THERMAL BASELAYER TOP AND PANTS (ABOVE)

A soft handle thermal fabric approved by Tihoi instructors that is hydrophobic, which means it has been manufactured utilising 100% hollow core polyester. This garment will catch and hold warm dry air both within and under the fibres, creating a warm dry insulation layer next to the skin-making it the perfect clothing system base layer. Odour reducing treatment has been applied to the fabric, so it is less prone to retaining body or other odours. Quick drying, hardwearing, moisture wicking and warm.

Size 14 and XS-3XL. Odour resistant, tough wearing, thermal insulation and wicks moisture. Supplied in a Tihoi souvenir box.

Colour: Black/gold trim

**PRICE PER GARMENT PRICE: \$27.00 EA**



Source: googleimages.com





Source: googleimages.com



Please note  
Pack colours may vary  
from images shown  
above.

### 1 DIRAN 65-75L PACK (ABOVE)

Lowe Alpine Diran is fully featured with a front-entry and bellows side pockets, and sleeping bag compartment. The new basic-level Axiom adjustable back system provides a softer back panel with breathable spacer mesh and pull to adjust harness. 65L extending to 75L.

**HIGHLY RECOMMENDED BY TIHOI DIRECTORS**

**Colours:** Grey, green, blue, black

**Two sizes** M/L L/XL

**RRP: \$350.00 OUR PRICE: \$299.00**



### 5 LOWE ALPINE VECTOR 30 DAY PACK (LEFT)

A durable and well-made day pack with a strong mountain heritage. 30L

**PRICE: \$59.00**

### 2 TATONKA BISON 60/70L TRAMPING PACK (NEW) ( BELOW)

**IDEAL FOR BOYS AROUND 55KG WEIGHT.**

This pack is suitable for boys around 55 - 60 kgs with a small frame and includes the X1 carrying system for heavy loads. The harness is constructed to fit a slim body form. The new model is lighter weight without compromising performance. The hip fins have been redesigned for more efficiency and comfort in load transmission.

**HIGHLY RECOMMENDED BY TIHOI DIRECTORS**

**Colours:** red

**RRP: \$499.00 OUR PRICE: \$429.00**



### 3 TATONKA YUKON 70L PLUS 10 PACK (RIGHT)

A lighter weight, fully featured trekking/tramping model, with a size adjustable V2 harness carrying system. Carries medium to heavy loads. Rain cover included. Fits and sits perfectly.

**RRP \$ 450.00 OUR PRICE \$425.00**

### 4 TATONKA PACK 75L (LEFT)

Tatonka Bison 75L built on the award winning X1 adjustable carrying system. Originally designed for the German military, the X1 harness system is ideal for long distances, carrying heavy loads. Ultra comfort.

Please refer to enclosed Tatonka Bison information in this pack. This pack is for serious trampers.

**RRP \$495.00 OUR PRICE: \$470.00**

**95L on request. POA (RIGHT)**



### 6 PACK LINER

Large 150cm x 65cm

**PRICE: \$6.50**

### PACKING YOUR PACK

Packs are not waterproof so you will need to line it with a pack liner. Ensure all your gear is inside the pack. Hanging items on the outside catch on the bush and fall off. Remember to pack your group gear such as foods, tents and a cooker.





## 1 DOITE 4863 GEOCEN LANTERN (RIGHT)

This lantern has three days of continuous use at high mode., with 10 day flashing ability. Innovative convex reflector provides flawless reflection. Green LED indicator shows the lantern in darkness/emergency. Output power up to 300 lumens. Water resistant  
**BATTERIES NOT INCLUDED**  
**PRICE: \$55.90**



## 2 COTTON BUSH HAT (RIGHT)

Wide brim gives extra protection from the sun, ventilation eyelets, draw-cord and toggle, press stud to fold the brim up to the sides. Allows moisture to be whisked away from your head. Colour: Camo  
**PRICE: \$29.00**



## 3 MICROACTIVE JOCKEY UNDERWEAR (ABOVE)

Midway Trunk Jockey. Performance microfibre - lightweight, smooth fabric for comfort. Fast drying with mesh panels for breathability. Double layer pouch for extra support. Colour: Black.  
**PRICE: \$29.00**



## 5 SLEEPING BAG LINER (ABOVE)

100% Polyester made by Bush line apparel. Great for keeping the sleeping bag clean and easy drip dry. It adds an extra degree in warmth. Colour: Black  
**(No cotton or polycotton please).**  
**PRICE \$29.90**



## 6 SPORT-WASH

Scent destroying laundry detergent. No scent kills odour. Ideal for washing seam sealed jackets to preserve seal. Wash in cold water.  
**532 ML BOTTLE**  
**PRICE: \$19.90**

## 7 WATERPROOF AND STAIN PROTECTOR

Repels water and stains to keep leather boots, shoes and handbags clean and dry. Suitable for suede leather and fabric shoes 200g can.  
**PRICE: \$13.90**



## 4 UNISEX COMPRESSION SHORTS (ABOVE)

Unlimited edition lightweight, breathable compression shorts. Provides muscle support while allowing freedom of movement. leggings also available by order.  
**Not recommended for sleeping in as will inhibit circulation.** Very durable. Size XXS - 2XL  
**PRICE : \$55.00**



**Sports wash's** secret is unlike other detergents designed to leave brighteners, fragrances, and other residue behind, Sport-Wash rinses completely. Nothing is left on your clothing to clog the pores of your fabric. Cotton, wool, and synthetic materials and left completely clean. Insulation like down, Thinsulate, and Hollofil fluff up for maximum warmth. And even difficult to clean sportswear materials such as Gore-Tex have their waterproofing and breathability restored. In addition, if you or any members of your family have sensitive skin or are allergic to the residue left behind by commercial detergents, Sport-Wash eliminates the rash, redness, and irritation you've suffered through with other detergents. No more itchy, irritated skin. Sport-Wash will remove stains and odors without harming bright colors. It likely costs less per load than your regular laundry detergent and completely eliminates the need for fabric softener (another source of odour and chemical irritation).





### 1 TURU OVERALLS

Poly cotton full length overalls.

Colour: Navy

Size: 3 - 14

**PRICE: \$75.00**



### 3 BODYLINE WETSUITS NOW WITH TIHOI STAG IMAGE ON BACK (LOWERE LEFT)

Made in New Zealand 3mm neoprene all over, including arms and legs. Body line with Tihoi stag graphic on the back

Size 12, 14, 16, XS-3XL

**PRICE: \$279.00**



### 4 FENIX RECHARGEABLE HEADLAMP HL18R RECOMMENDED BY TIHOI INSTRUCTORS

A compact USB rechargeable headlamp with extreme versatility. Featuring two separate beam options (spot/flood, 6 different lighting levels (plus SOS)). A simple operating system, using a soft neutral beam that magnifies natural colours with a simple click of the button. Max output of 400 lumens and reach run times of 150 hours. If you can't charge your batteries you can use a backup of 3 AAA batteries to operate the light. Lightweight 80gm body being held in place by a remarkably comfortable headband with reflective strips and anti slip design including a battery level indicator.

**OUR SPECIAL PRICE: \$99.00**



### 6 CRESSIE DIVE BOOTIES

5mm neoprene boot style with zip

Size: 5 - 14

**PRICE: \$65.00**



### 5 HEAD TORCH SEO3 LED LENSER

Features smart light technology for switching quickly between high and low power and a signal mode and boasts three white LEDs, 1 red and a helpful carabiner clip. Performance high 90 lumens 10 hours, low 15 lumens 40 hour. Far superior to previous H5 model. Weight 3.4 ounces. Colour: Orange, green

**PRICE: \$75.00**



## 2 RECOMMENDED BY TIHOI

### RASH TOP THERMAL (BELOW) VERY POPULAR

Thermo short sleeve rash shirt which features Hi tech knitted microfibre which provides UV 50 plus sun protection, it does not hold water, is rapid drying, super four way stretch and highly effective against wind chill. Other features include flatlock stitching to prevent rashes, a turtle neck for extra protection, extra body length and internal fleece for extra comfort and warmth. This top is perfect to wear under a wet suit, for surfing, kayaking, water skiing, yachting, snow sports and even for walking on a cool morning by providing superior insulation. Size: XS, S, M, L, XL, (Larger sizing to 4XL can be ordered if required).

**PRICE: \$49.00**





# PACK SPECIALS

## 1 SOCK PACK SPECIAL

### Eight pairs of top quality Alp thermal socks

Made in NZ - 70% merino wool, 30% nylon

Shrink controlled with nylon reinforced heel and toe.

The ultimate in warmth and com-

fort, naturally odour resistant,

non-abrasive properties. Pack includes

**two pairs of sock liners (right)**

**NZ made**, breathable, longer length and lightweight

**one pack 4m black bias binding**

**PACK PRICE: FREE label sewing available on this pack (Please supply 20 name labels)**

**PRICE: \$175.90**

Please order your sock pack early to avoid missing out on the label service. The cut off date for the label service for Tihoi intake one 2021 will be: **wednesday 13 January 2021**. Please supply 20 labels to the shop



2

## STAINLESS STEEL DINNER SET SPECIAL

One 350 ml naturo mug

one stainless steel dinner plate

one stainless steel bowl

one stainless steel cutlery set

(knife, fork and spoon)

**Only \$39.90**

**(includes free in-house engraving)**





**While stock lasts**

Source: googleimages.com



## STARTER PACK SPECIAL

- one x Lowe Alpine Diran 65-75L pack  
(pack highly recommended by Tihoi staff)
- one x pair Hunters Element Echo tramping boots (size 6-14)
- one x Ridgeline 5 piece fleece pack (black set)
- two x Dri gear quick dri t shirts
- one x pair bed socks
- two x 30L Ace Camp heavy duty dry bags
- one x Rab ignition 3 sleeping bag
- one x neck warmer
- one x thermal roll mat

PRICE (regular size Rab Solar 3 sleeping bag) **\$999.00**

PRICE (X long Rab Solar 3 sleeping bag) **\$1,010.00**

**(A total saving of approx. \$100.00).**

### Black pack right consists of:

Black Anorak w/hood, black beanie,  
black Heartland V tee, Black Micro  
Stay dry trousers, Black downunder  
socks.





## Very important information

Dear parents/caregivers,

This is just a note to ensure that you have the correct information regarding all waterproof garments that you have purchased.

Please refer to the important care instructions below regarding all seam sealed waterproof clothing. It is very important that all wet clothing is hung up as soon as possible to preserve the waterproof tape from gathering mould spores and dirt, which will damage the glue's ability to adhere to the garment. Please also be aware that the heat can melt the glue on the waterproof tape which can cause the tape to lift.

### Care instructions for Waterproof garments

Close all zips, domes and Velcro then turn garment inside out.

Use a gentle machine wash on a cold cycle. (If you are unsure of the washing temperatures of your machine use cold water only to avoid damage). We recommend using Atsko Sports Wash or a similar product specially designed for technical fabrics strictly following the manufacturer's instructions. Spin to remove excess water. It will help if you turn the garment back out the right way and re-spin to remove any water that may be sitting on the inside. Line dry in shade. Do not leave or store wet / damp as this will promote the growth of mould which will destroy the water proof membrane and damage other materials. Your garment can be tumble dried on a cool cycle; again, if you are unsure of the temperature of your machine it is best to line dry to avoid damage.

Do not Dry Clean, Iron, Bleach, use Fabric Softeners or other harsh chemical cleaners. These can destroy the technical qualities of the materials used in the fabric.

Keep away from direct heat which can soften glues, sparks or flames as these can burn holes.

Be careful around sharp objects that might puncture holes in the waterproof membrane like gorse, bush lawyer, thistles, etc.

Do keep your garment clean as a build-up of sweat and dirt will potentially damage the materials, created unnecessary wear and reduce the overall performance. It does not need to be washed after every use but if it looks dirty then it's probably time to give it a clean.

If you start to notice water not beading and running off the outer fabric but holding water instead then recoating the DWR finish is required. We recommend using Sno-Seal Silicone Water-Guard strictly following the manufacturer's instructions.

## TERMS AND CONDITIONS OF REPLACEMENT

Products supplied by The School Shop are covered by a manufacturer's warranty that applies to faulty workmanship or product malfunction within one year of the purchase date. Product misuse or poor product maintenance is not covered by this warranty. To ensure that the product warranty applies, please read the following carefully.

### TRAMPING BOOTS

To ensure that the life of the EVOLVE TRAMPING BOOTS is prolonged, they require the following care:

- Boots are to be waterproofed with an appropriate leather waterproofing agent (e.g. Sno seal or Nikwax) prior to their use, and regularly thereafter when used in wet or damp conditions.
- Boots are to be dried and aired after use, especially when the boots have become wet or damp.
- Boots are to be laced and tightened appropriately when wearing (see specific instructions in product box).

### SLEEPING BAGS

Sleeping bags should be cared for accordingly:

- Aired and dried to protect the material from accumulating mildew.
- Do not roll and pack into the bag as it can increase moisture build up. Stuff into the cram bag.
- Used in conjunction with a sleeping bag liner to prevent general wear and tear.
- Hand washed or dry-cleaned according to the cleaning instructions. Sleeping bags are not made to be put in washing machines.

### TRAMPING PACK

When caring for your TRAMPING PACK, ensure the following:

- All straps must be tightened and excess straps tied to the pack to avoid them being caught, especially during transportation.
- A pack liner is inserted into the pack as an additional waterproofing precaution.

While this is by no means a comprehensive list of instructions, it is important to follow the manufacturer's instructions and ensure care is taken with these garments. We would expect that these products would last long after the students' Tihoi experience.

NOTE: ANY PRODUCT THAT IS FOUND TO BE FAULTY BY OUR SUPPLIERS WILL EITHER BE REPLACED OR CREDITED AT THE DISCRETION OF SHOP MANAGEMENT. ALL WATERPROOF CLOTHING THAT IS SEAM SEALED MUST BE WASHED IN COLD WATER USING ATSKO SPORT-WASH DETERGENT.

All reasonable measures have been taken to ensure the accuracy of the information in this catalogue.

St Paul's Collegiate School makes no guarantees as to the accuracy of this information.

All items are subject to our terms of trade and are available only while stocks last.

Any item returned for a claim is sent directly to the supplier to check over and they will advise us on the outcome. The Consumers Guarantee act says that the supplier must be given the opportunity to either repair or replace an item in the case of a warranty claim.

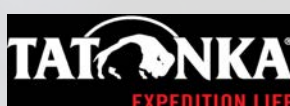
### TIPS FOR SEAM WELDED RAINWEAR.

In order to preserve the durability of the welded tape on seams please do not wash garment in harsh detergents or hot water. If the garment is left lying in the heat or by a fire and the tape lifts up, it is easy to press back down again providing the inside of the garment is clean.



### PRODUCT WEBSITES FOR FURTHER VIEWING:

[www.tightlines.co.nz](http://www.tightlines.co.nz)      [www.essentialsapparel.co.nz](http://www.essentialsapparel.co.nz)  
[www.ridgeline.co.nz](http://www.ridgeline.co.nz)      [www.evolveoutdoors.co.nz](http://www.evolveoutdoors.co.nz)  
[www.hunterselement.com](http://www.hunterselement.com)





### School Shop term trading hours

7.45 am - 4.00 pm Monday to Friday

### After School Tihoi appointments

available on request

### School Shop holiday trading hours

Thursday and Friday of the last week only  
of the holidays, except for public holidays.

Closed **EXEAT** weekends (please phone first  
or check the website for updated information)

**Saturday hours** are advertised on the school  
website and in the front of this brochure.



### CONTACT DETAILS

Please contact one of our friendly, knowledgeable staff,  
Sandy, Kelly, Tash or Cheryl.

The School Shop is located in the foyer of the Student Centre  
at St Paul's Collegiate School.

Shop Tel: (07) 957 8841 Fax: (07)957 8844

Shop Manager DDI: (07) 957 8882

Email: [shop@stpauls.school.nz](mailto:shop@stpauls.school.nz)

**Online shop:** <http://www.stpauls.school.nz/shop>

This catalogue was created and  
designed by Sandy Koopman.

Images supplied by  
[googleimages.com](https://www.google.com/search?q=googleimages.com) (where referenced),  
Suppliers, Shop Staff and Tihoi Venture School.

